

# NaviGate™ Point Feature Management (Notes) Module

## Software Product Description

### Product Summary

The *NaviGate* Point Feature Management Module allows users to create, edit, and manage notes and redlines within *NaviGate* (both office and field users).

### Description

The standard *NaviGate* application emphasizes display of existing data sources over data creation or editing. The *NaviGate* Point Feature Management Module provides a tool for adding edits and transient notations to maps for other business groups to benefit from. Both notes and redline sketches can be created such as mapping error notes, abnormal device setting and other important information field personnel need to communicate to office and headquarters groups. For redlines, users can “cookie-cut” a map portion draft redline sketch information and send that markup as a document to others in the organization.

The *NaviGate* Point Feature Management Module (PFM) provides the following specific features:

- Users can add, delete, or move the location of any point notation.
- The system provides standard Web-based forms for adding notes of any type. Users can add notations such as a change, new position or deletion of any asset map feature and/or comments about that device or feature.
- The standard reporting features of *NaviGate* can be used on the added notes, providing powerful linking and navigational features for managed features.
- Features and notes in the PFM can be viewed in the standard *NaviGate* application. When there are many notes and note types, they can be summarized and viewed within the *NaviGate* Area Browser .
- Map markup panels can be created through a simple cut-out process and redlines and notes added. Markups can then be sent and/or linked to work tickets for other business groups.
- Notes managed by the PFM can optionally be linked to another feature on the map. For example, an electric delivery service point can be linked to the associated transformer, a citizen complaint point can be linked to an associated parcel or facility, or a water sampling location can be linked to a nearby pipeline.
- Notes can be categorized into different classes, for example, mapping errors/fixes, current device status, abnormal or inoperable devices, historical maintenance notes, or any other category important to your field business operations. Various note categories can be symbolized differently.

### Data Requirements

All notational data from PFM is stored in the standard *NaviGate* Core relational database. When notations are entered using the *NaviGate* Point Feature Management Module, information is then viewable by all users. Additionally, it displays and manages data in the same spatial coordinate system (projection and datum) as the remainder of your *NaviGate* data.

### Installation and Configuration

The purchase price of the *NaviGate* Point Feature Management Module includes professional installation of the software by a Gatekeeper Systems technician, and integration of the module into your existing *NaviGate* application. New data types are added by a properly trained system administrator or by Gatekeeper Systems under a support agreement. Contact Gatekeeper Systems for more information.

### Software Prerequisites

The *NaviGate* Point Feature Management Module uses the functions and features of the standard *NaviGate* application framework. You may add this module to any current version of *NaviGate*.

### Support Options

Standard Support is available for this module, providing support via email, the Internet and telephone during normal Gatekeeper Systems business hours. Standard Support also provides product updates as new versions of this module are released.

### Pricing

Refer to the *NaviGate* Price List for current pricing. Volume and package discounts are also available. Contact a Gatekeeper Systems representative for more information.

### Licensing

This module is licensed under the standard Gatekeeper Systems license agreement. The license agreement grants access to the software source code for the licensed module. A copy of the standard agreement is available upon request.

### Ordering

The *NaviGate* Point Feature Management may be ordered by contacting Gatekeeper Systems. Please specify the *NaviGate* version with which you will be using this module.

### Delivery

In most cases, the *NaviGate* Point Feature Management Module can be installed immediately. Contact Gatekeeper Systems for currently available delivery times.

GKS Part Number: 5318-PO1-2

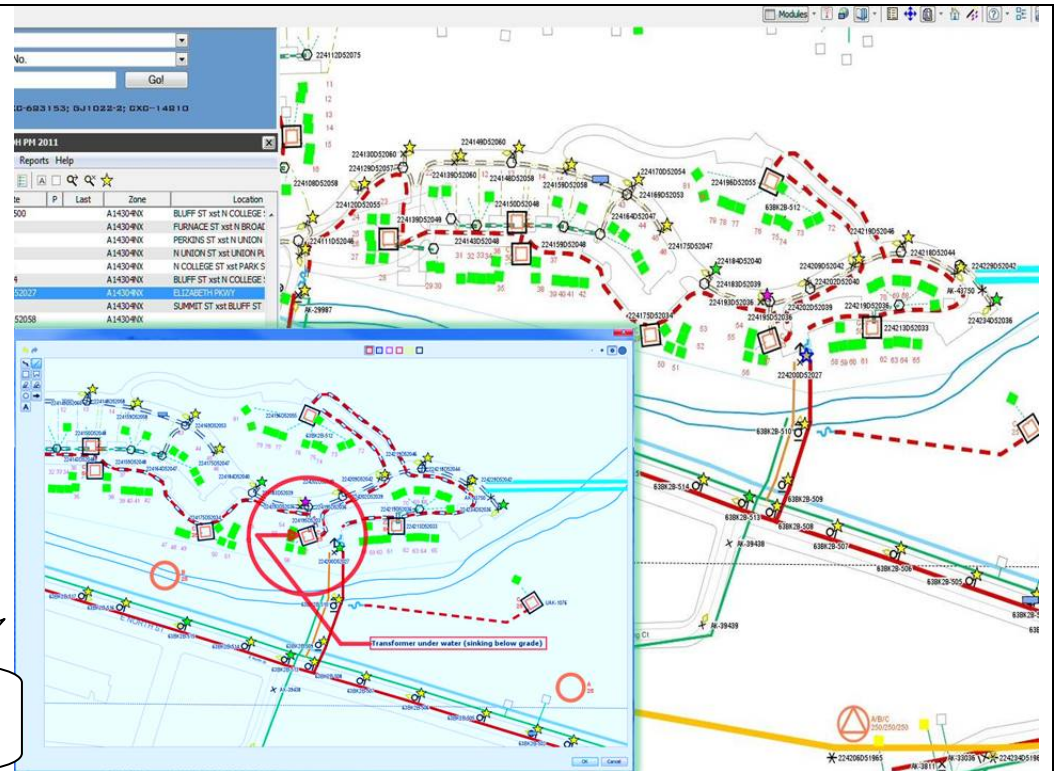
Copyright © 2002 by Gatekeeper Systems. All rights reserved.

## Using the Sketch and Red-line Option

The Point Feature Manager lets you cookie cut a copied portion of the map that becomes a new document. Users can sketch, add text and redline the document using a palette of light-weight sketch tools.

Once created, the sketch document can be attached or linked to a note or transactional processes like completed work orders or inspections.

Sketch maps can easily be cookie-cut to create a new sketch document

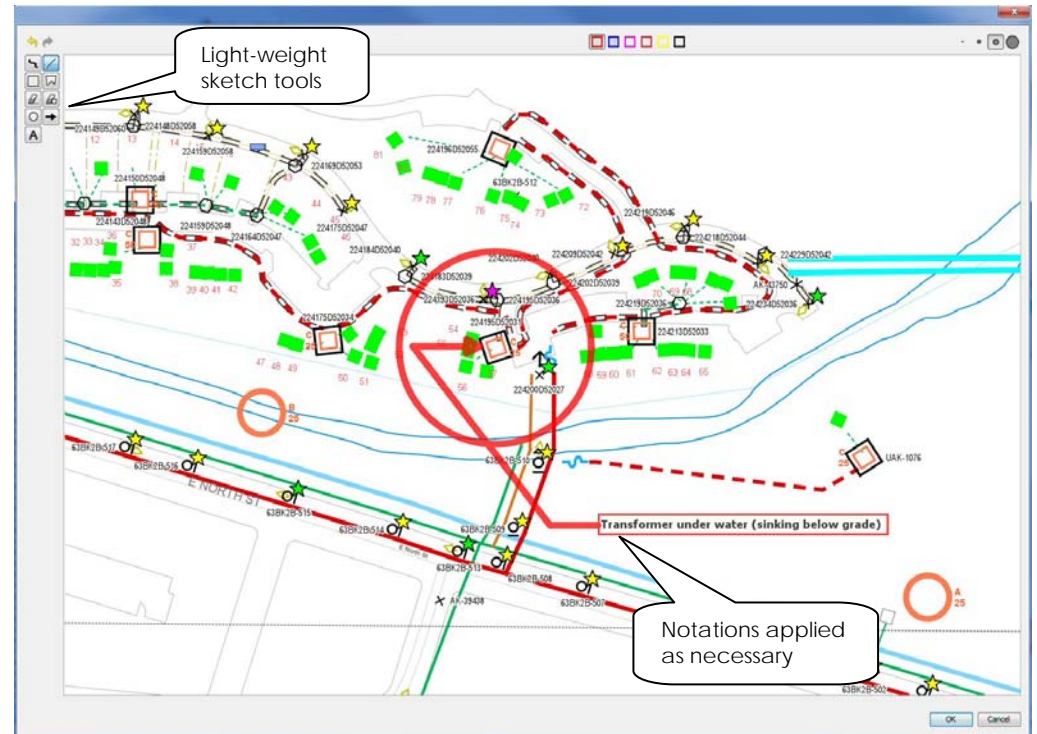


## Creating Mapping Error Notes

An automatic or manual process in NaviGate can also send the document to a mapping department or other group depending on your business process.

Light-weight sketch tools

Notations applied as necessary



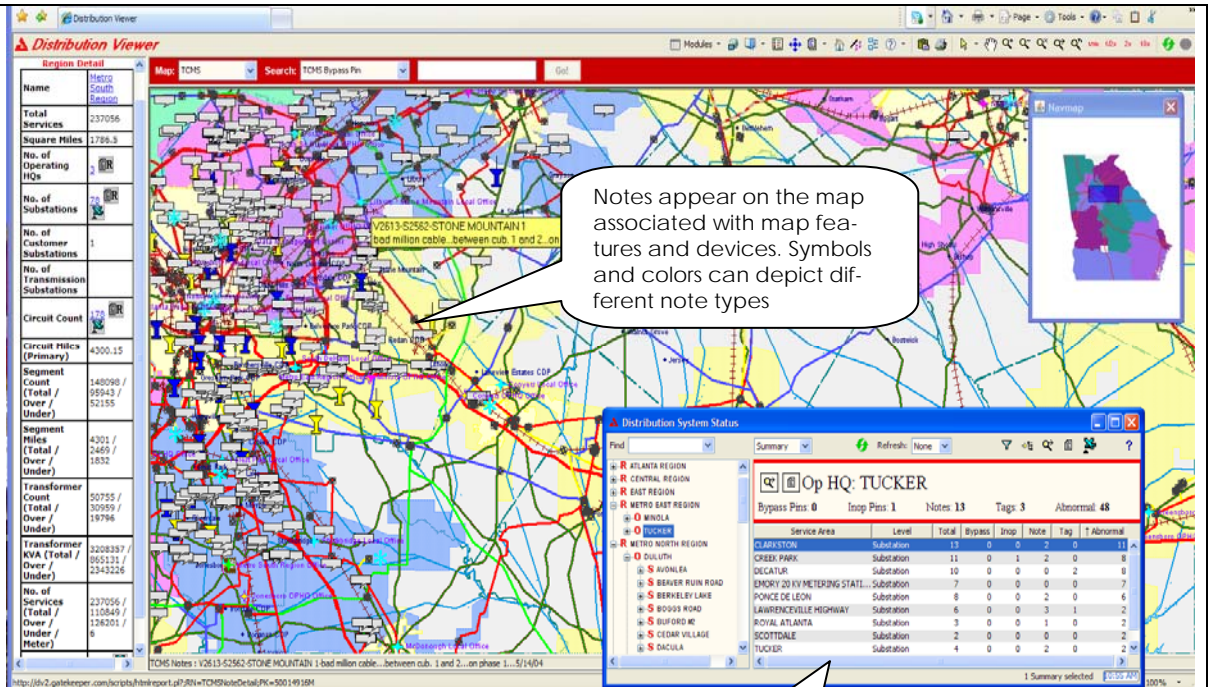
# Gatekeeper Systems

Delivering Spatial Data to the People Who Need It

## Manage Multiple Kinds of Notes from a Single Tool

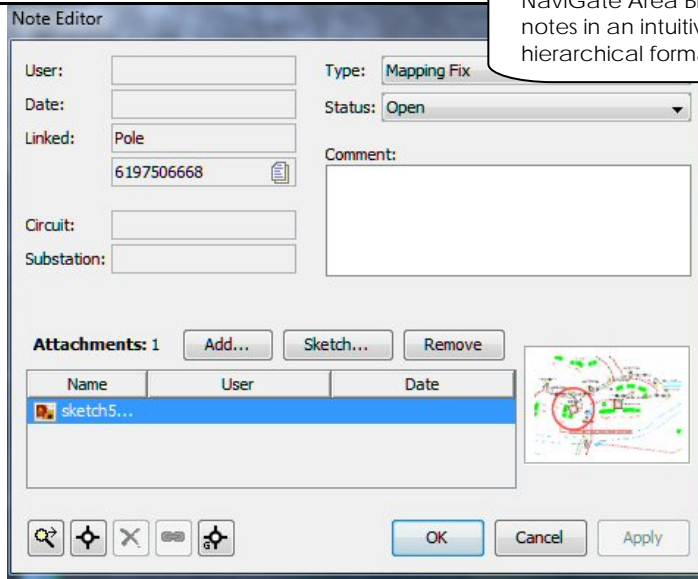
Use the same Point Feature Manager to work with many different kinds of notes in the same map. Information such as inoperable devices, device status and simple map fixes can be managed together or separately.

Once created, notes can be viewed by others in the organization



## Edit Attribute Data Easily

In this case a mapping fix note form gets a sketch attached through an easy edit window. Multiple sketches and even pictures can be linked to the note.



# Gatekeeper Systems

Delivering Spatial Data to the People Who Need It