

NaviGate Redlining (Map Markup) Module

Software Product Description

Product Summary

The *NaviGate* Redlining Module allows end users to “redline” or place markup directly on top of a *Navigate* map. The objects drawn are stored in the *NaviGate* database, and are immediately available to other users of the Redlining Module and to other *NaviGate* users in general. Markup can be edited again later, printed, or deleted by a drafter who has later incorporated the data into the base GIS data set. All markup is stored in the *NaviGate* relational database (usually in Oracle) and may be used (or even modified) by other business applications.

Description

The *NaviGate* Redlining Module installs as an add-on module on top of any existing *NaviGate* installation. The data in your standard *NaviGate* system may be used as a backdrop or base map on which redline or map markup may be placed.

Using the Redline Module, *NaviGate* users will be able to sketch directly over the *NaviGate* map window. They can draw business objects of all kinds, such as meters, distribution lines, project boundaries, hazard areas, and so on. Users do not need to concern themselves with the graphic representation of the object, such as line color, line type, font, or weight. Instead, users work graphically using business objects such as “new hydrant”, “service location”, “service line”, “pole”, or “project boundary”. The objects are automatically rendered properly when they are displayed in the *NaviGate* map.

Users can also edit markup by adding additional text, changing the type of object (say, from a 6-inch pipeline to an 8-inch pipeline), or drawing the object at a different location.

The markup data is stored as actual business objects, not as simple graphics. Therefore, your users can retrieve useful reports from *NaviGate*, such as summaries showing the total number of feet of new distribution line, or the number of new meters placed within a project.

Users can control access to the data they enter, and can grant access to other users for either viewing or editing.

All entered data is stored in the *NaviGate* relational database, usually using Oracle Locator. Other applications can access the markup data in that database for reporting or display.

When used with the *NaviGate* Printing Module, map markup can be shown on hardcopy *NaviGate* maps.

Data Requirements

The *NaviGate* Redlining Module displays the same data that is visible in your *NaviGate* application. No additional data is required. Data input by the user of the Redlining Module is stored in your *NaviGate* database (usually Oracle Locator).

Installation and Configuration

The purchase price of the *NaviGate* Redlining Module includes professional installation of the software by a Gatekeeper Systems technician, and integration of the module into your existing *NaviGate* application. Contact Gatekeeper Systems for more information.

Software Prerequisites

The *NaviGate* Redlining Module uses the functions and features of the standard *NaviGate* application framework. You may add this module to any current version of *NaviGate*.

Support Options

Standard Support is available for this module. Standard Support provides support via email, the Internet and telephone during normal Gatekeeper Systems business hours. Standard Support also provides product updates as new versions of this module are released.

Pricing

Refer to the *NaviGate* Price List for current pricing. Volume and package discounts are also available. Contact a Gatekeeper Systems representative for more information.

Licensing

This module is licensed using the standard Gatekeeper Systems license agreement. The license agreement grants access to the software source code for the licensed module. A copy of the standard agreement is available upon request.

Ordering

The *NaviGate* Redlining Module may be ordered by contacting Gatekeeper Systems. Please specify the *NaviGate* version with which you will be using this module.

Delivery

In most cases, the *NaviGate* Redlining Module can be installed immediately. Configuration and installation takes approximately one day on site. Contact Gatekeeper Systems for currently available delivery times.

GKS Part Number: 5318-PR1-1

Copyright © 2002 by Gatekeeper Systems. All rights reserved.

Gatekeeper Systems

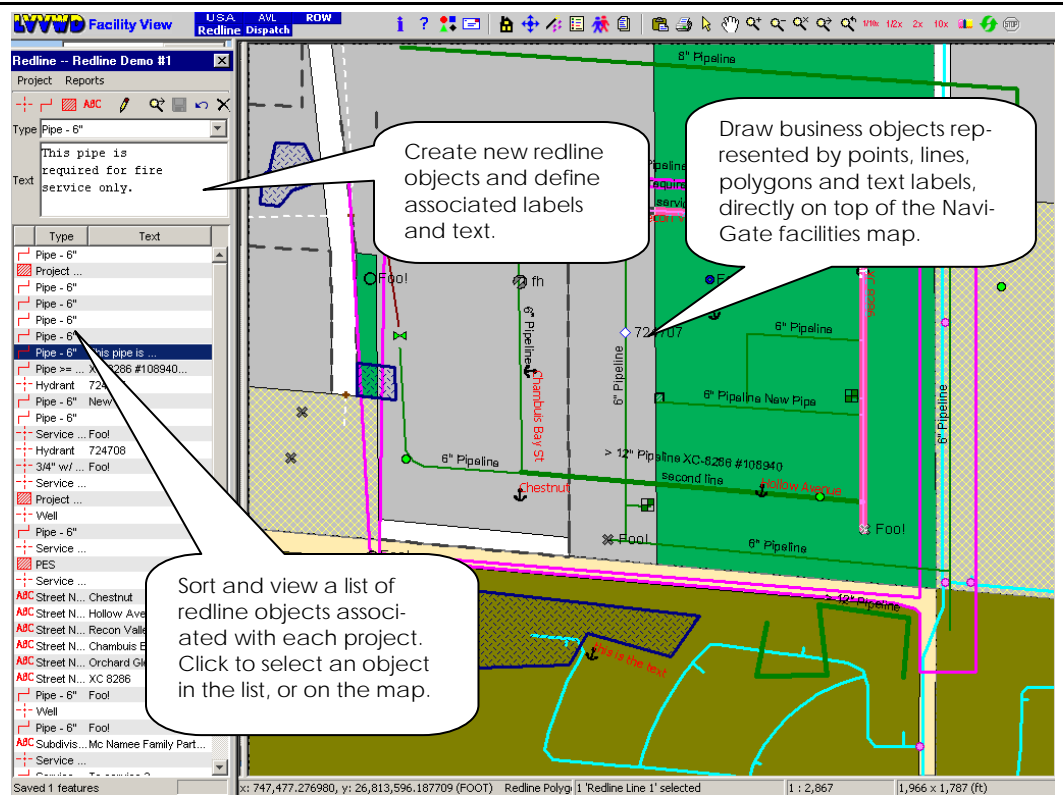
Delivering Spatial Data to the People Who Need It

Sketch Directly on Top of the NaviGate Map

Using the Redline Module, your *NaviGate* users will be able to sketch directly over the *NaviGate* map window. They can draw business objects of all kinds, such as:

- New service points, meter locations, valve locations, transformer locations, hydrants, and other point features
- Service lines, distribution lines, roadway alignments, and other linear features
- Project boundaries, draft parcel boundaries, "no travel" zones, and similar polygons
- Text, including rotated text and multiline text

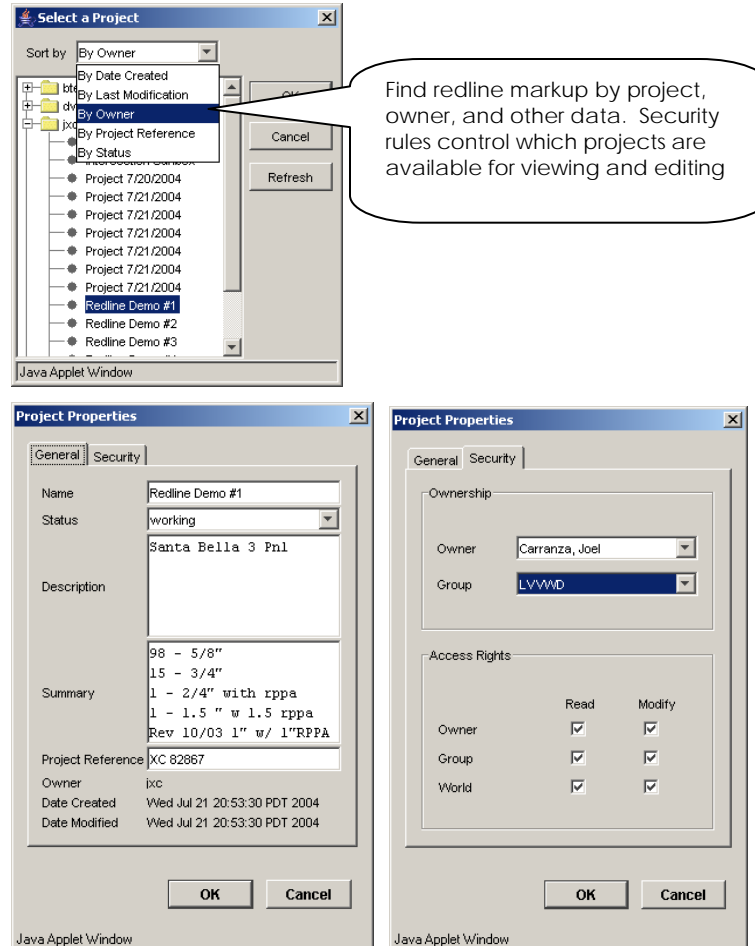
Users do not need to concern themselves with the graphic representation of the object, such as line color, line type, font, or weight. Instead, users work graphically using business objects such as "new hydrant", "service location", "service line", "pole", "project number text", or "project boundary".



Manage and Secure Redline Data on a Per-Project Basis

All redline data is tracked and organized by project, creator, status, and other key information. Users can find redline data to view or edit using the *NaviGate* Project Organizer.

Security rules define which users can view or edit the redline markup for each project. The project creator can grant read-only or modify access to other users in their group or in the *NaviGate* user community at large.



Gatekeeper Systems

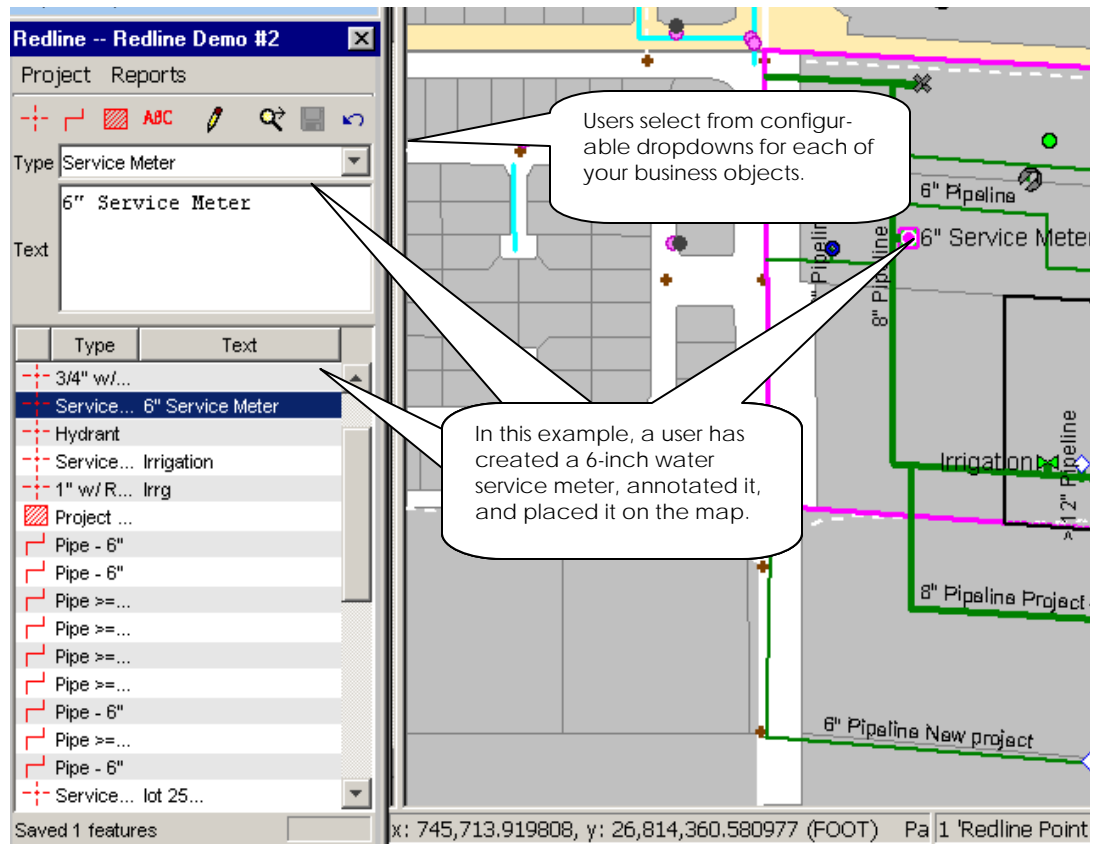
Delivering Spatial Data to the People Who Need It

Don't Just Draw - Create Objects That Represent Your Business

In many other map markup or redlining tools, users simply draw colored lines and place icons on the map. It is up to the user to decide if the line should be red, or dashed, and the drafting standards are difficult to enforce.

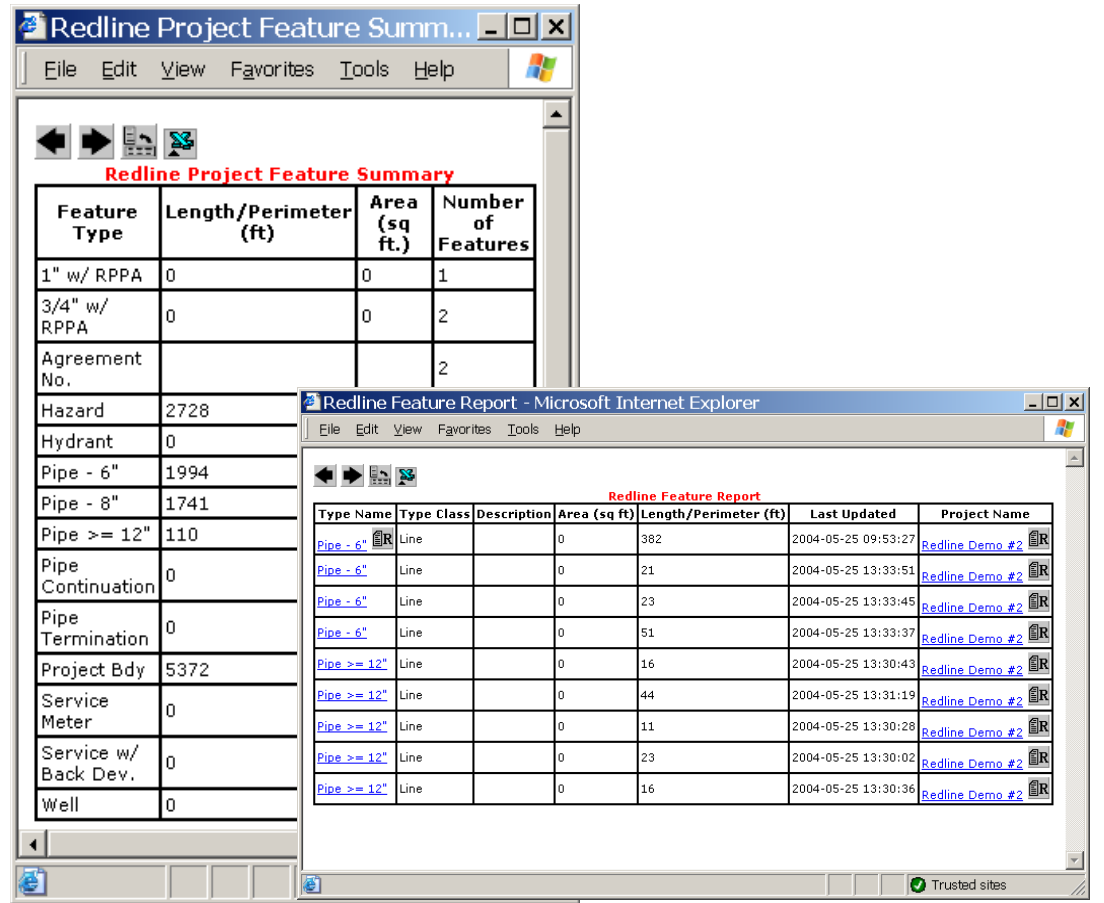
Objects in the NaviGate Redline Module are based on your specific business requirements. Instead of drawing a blue line, your user draws a "water distribution pipeline".

Your NaviGate System Administrator can create new kinds of redline objects. These objects are made available to users in a series of dropdown menus. The user can simply pick a type of object from the map, type in associated data (if any), and click to place that object on the map.



Integrated Reports Keep Track of Your Markup as Application Data

Turn your markup into true data that you can use in your application. Since users draw business objects such as service meters, pipelines and project boundaries, the NaviGate Redline Module can report on the number and size of these instances. Standard reports give you information about the length of drawn new service lines, the spatial area of project boundaries or sketched parcels, and so on.



Gatekeeper Systems

Delivering Spatial Data to the People Who Need It