

# NaviGate™ Buffering Module

## Software Product Description

### Product Summary

Buffering is the process of spatially identifying one set of objects that are near to another, such as parcels near a new shopping center or fire hydrants near a school. The *NaviGate* Buffering Module allows users to create, edit, and manage lists of buffered objects from within *NaviGate*. Lists of buffered objects can be used to generate mail-merged documents such as parcel owner notification letters.

### Description

The standard *NaviGate* application emphasizes display of existing data sources over data creation or editing. The *NaviGate* Buffering Module provides lightweight data creation and editing capability for lists of objects that are identified by their proximity to one or more other objects. The *NaviGate* Buffering Module provides the following specific features:

- Buffers can be created around any object on the map. Objects within the buffer (e.g., parcels) can be assigned to a project as the result of one or more buffering operations. Objects can also be added by using the mouse to select them on the *NaviGate* map. Users can add or delete objects from the project. Only one type of data can be the target of the buffering operation (e.g., parcels or services, but not both).
- Users can create their own “projects” to contain lists of associated buffers and selected buffered objects. Projects include project information (typically, project manager or contact person), dates, standard buffer dimensions (e.g., “300 feet”) and other project-specific information. A Project Organizer lets users conveniently identify and categorize projects.
- Objects associated with a project are thematically displayed in the *NaviGate* application’s map window. For example, all of the parcels associated with a notification project may be shown in yellow.
- Reports on objects can either be standard *NaviGate* reports (including Excel spreadsheets) or mail-merged documents. Typical uses of mail-merged documents include notification letters, door hangers for utility shutoffs or public notification activities, and facility worksheets. The *NaviGate* System Administrator can add new mail-merge document templates to the system.
- Use the Buffering Module together with aerial photos to prepare maps with buffers layered on top of photography.
- The *NaviGate* Buffering Module can be combined with other *NaviGate* modules such as *NaviGate* USA (Underground Service Alerts) and the *NaviGate* Printing Module.

### Installation and Configuration

The purchase price of the *NaviGate* Buffering Module includes professional installation of the software by a Gatekeeper Systems technician, and integration of the module into your existing *NaviGate* application. Contact Gatekeeper Systems for more information.

### Software Prerequisites

The *NaviGate* Buffering Module uses the functions and features of the standard *NaviGate* application framework. You may add this module to any current version of *NaviGate*.

### Support Options

Standard Support is available for this module, providing support via email, the Internet and telephone during normal Gatekeeper Systems business hours. Standard Support also provides product updates as new versions of this module are released.

### Pricing

Refer to the *NaviGate* Price List for current pricing. Volume and package discounts are also available. Contact a Gatekeeper Systems representative for more information.

### Licensing

This module is licensed under the standard Gatekeeper Systems license agreement. The license agreement grants access to the software source code for the licensed module. A copy of the standard agreement is available upon request.

### Ordering

The *NaviGate* Buffering Module may be ordered by contacting Gatekeeper Systems. Please specify the *NaviGate* version with which you will be using this module.

### Delivery

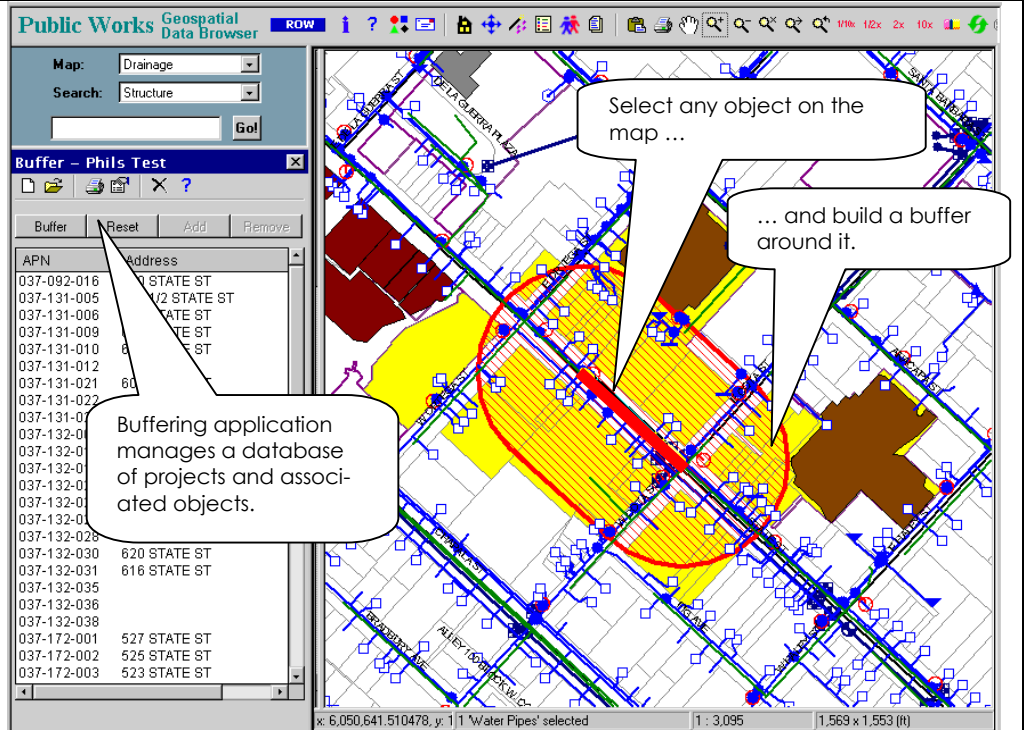
In most cases, the *NaviGate* Buffering Module can be installed immediately. Contact Gatekeeper Systems for currently available delivery times.

GKS Part Number: 5318-BF1-1

Copyright © 2002 by Gatekeeper Systems. All rights reserved.

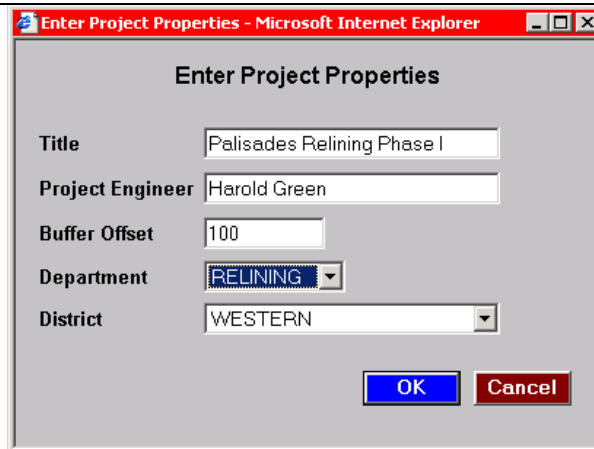
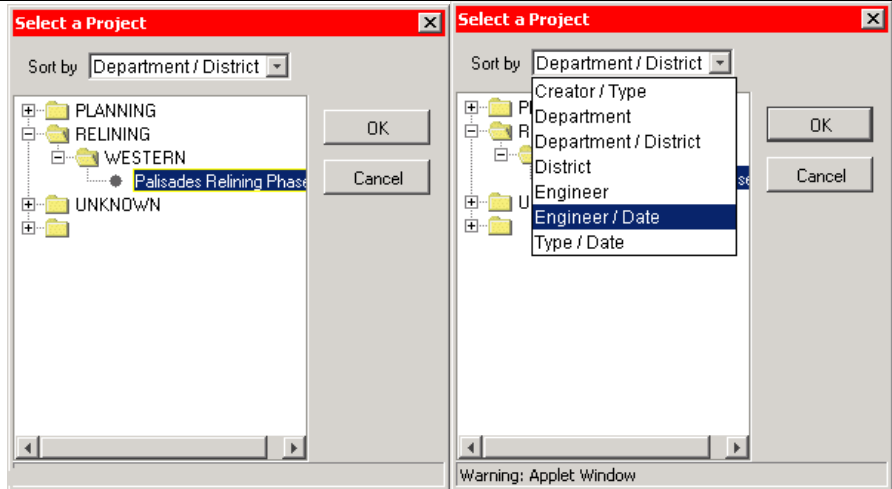
## Build Buffers Graphically

Select any object on the map and graphically build a buffer around it. The application will then display the parcels or other objects that are within the buffer, and add those to a list (on the left). The list of buffers and objects is maintained in the database on the server, and can be recalled by any *NaviGate* user.



## Manage a Database of Buffering Projects

Use the *NaviGate* Project Organizer to maintain lists of projects. Each project has its own set of project attributes, including the default buffer offset to use when building buffers around selected objects.





## Reports on Selected Objects

Reports are available as HTML pages or as Excel spreadsheets.

The Buffering Module can also automatically create mail-merged documents, so you can easily generate standardized form letters from buffering projects.

Map: Facilities  
Search: Intersection  
[61st & fig] Go!

Buffer - Palisades Relining Ph...  
Buffer Reset Add Remove

APN	Address
138B117-205	1471 N PALISADES
138B117-205	1473 N PALISADES
138B117-287	1397 N PASEO DEL
138B117-254	1411 N PASEO PUI
138B117-245	1427 N PASEO PUI
138B117-245	1430 N PALISADES
138B117-333	1367 N PALISADES
138B117-311	1383 N PASEO DEL
138B117-231	1431 N PASEO DE
138B117-231	1440 N PALISADES
138B117-198	1455 N AVENIDA D
138B117-225	1424 N AVENIDA D
138B117-197	1448 N AVENIDA D
138B117-246	1408 N AVENIDA D
138B117-224	1438 N PASEO DE
138B117-261	1396 N PASEO DE
138B117-233	1418 N AVENIDA D
138B117-242	1423 N PASEO PUI
138B117-212	1436 N AVENIDA D
138B117-211	1443 N PASEO DE
138B117-238	1412 N AVENIDA D
138B117-239	1419 N PASEO PUI
138B117-250	1407 S PASEO PUI
138B117-276	1393 N PASEO DEL
138B117-219	1430 N AVENIDA D
138B117-186	1454 N AVENIDA D
138B117-203	1442 N AVENIDA D
138B117-279	1395 N PASEO DEL
138B117-264	1394 N PASEO DE
138B117-214	1447 N PASEO DE

Microsoft Excel - xlsreport[2].xls  
File Edit View Insert Format Tools Data Window  
A2 =  
A B  
1 Address Detail  
2  
3  
4 Address Zipcode  
5 1454 N AVENIDA DE CORTEZ 90272  
6 1448 N AVENIDA DE CORTEZ 90272  
7 1455 N AVENIDA DE CORTEZ 90272  
8 1442 N AVENIDA DE CORTEZ 90272  
9 1383 N PALISADES DR 90272  
10 1387 N PALISADES DR 90272  
11 1389 N PALISADES DR 90272  
12 1391 N PALISADES DR 90272  
13 1393 N PALISADES DR 90272  
14 1395 N PALISADES DR 90272  
15 1397 N PALISADES DR 90272

Generate an Excel spreadsheet directly from the list of parcels within the buffer.

## Use Satellite and Aerial Photography

Available satellite and aerial photography can be used to as an aid when showing buffer areas, especially when communicating with members of the public.

OVS - Microsoft Internet Explorer  
Address: http://ovs.clarkpud.com

Map: Parcel  
Search: Parcel Address  
Go!  
Ex: 16715 NE 197TH AV.

Buffer - 42nd Avenue Extension  
Buffer Reset Add Remove

APN	Address
109779-988	12216 NE 41 ST
109779-988	12216 NE 41 ST
162383-000	12509 NE 44 ST
162531-062	12405 NE 42 ST
162531-042	12317 NE 43 CIR
162531-042	12317 NE 43 CIR
162531-016	12214 NE 42 ST
109779-100	12410 NE 41 ST
162384-026	12421 NE 42 ST
162384-014	4212 NE 125 AV
162531-010	4212 NE 123 AV
162531-048	12307 NE 43 CIR
109779-092	12512 NE 41 ST
109779-096	12500 NE 41 ST
109779-990	12212 NE 41 ST
162531-060	12408 NE 42 ST
162531-058	12404 NE 42 ST
162448-000	12611 NE 44 ST
162448-000	12611 NE 44 ST
162448-000	12611 NE 44 ST
162384-022	12409 NE 42 ST
162531-022	12221 NE 42 ST
162384-018	12418 NE 42 ST

Lat: 45.650399, Lon: -122.541 'Street By Type' selected 1 : 4,000 1,803 x 1,561 (ft)